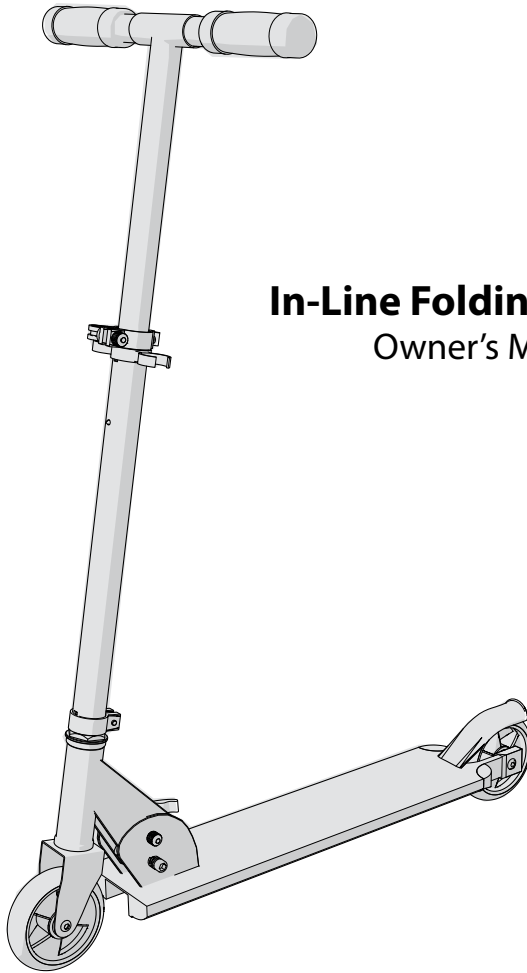


Date Code Label
Here



In-Line Folding Scooters Owner's Manual

HUFFY[®]
© Copyright Huffy Corporation 2019



This manual contains important safety, assembly, operation and maintenance information. Please read and fully understand this manual before operation.

Save this manual for future reference.



Always wear approved helmet and safety equipment when using this product.




See back page for Customer Service Information

Index

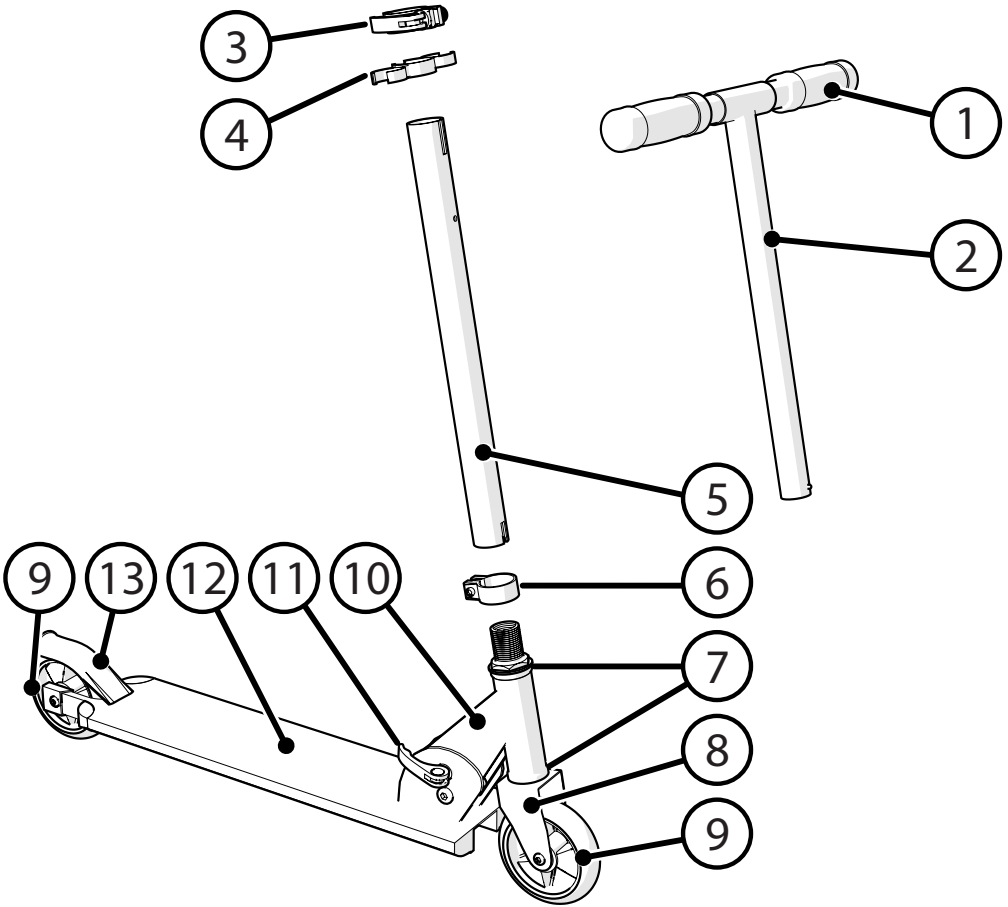
ENGLISH

• Parts Assembly.....	3
• Safety Information.....	4-5
• Maintenance.....	5
• Assembly.....	6-8
• Operation.....	9
• Warranty.....	11

Contact Information - Back Cover

-  **WARNING:** CHOKING HAZARD:
- Small parts, adult assembly required.
 - To reduce the risk of injury, adult supervision is required.
 - Never use in roadways, near motor vehicles, on or near steep inclines or steps, swimming pools or other bodies of water; always wear shoes, and never allow more than one rider.
 - The user must be **5+ years**, and weigh no more than **150 lb (68 kg)**.


Part Assembly



#	Description	#	Description
1	Grip Handle (x2)	8	Fork
2	Handlebar	9	Wheel (x2)
3	Clamp	10	Head Tube
4	Holder	11	Lock Clamp
5	Steering Tube	12	Deck Frame
6	Clamp	13	Fender/Brake
7	Bearing Set		

Safety and Warning Information

This product, like all wheeled vehicles, will provide safe, enjoyable transportation and recreation when used and maintained properly. Like bicycling, skateboarding, and in-line skating, riding this product can be dangerous even under the best of circumstances. We do not want you to get hurt. Please follow these safety rules.

 This symbol is important. It is the WARNING symbol. The warning symbol precedes safety instructions. Make sure the child understands these instructions. Failure to follow these instructions may result in injury to the rider or to others, or damage to the product.

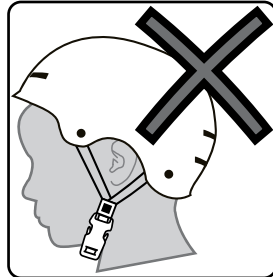
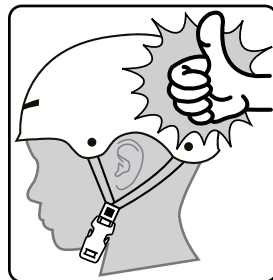
WARNING TO AVOID SERIOUS INJURY:

- Adult assembly required.
- **CHOKING HAZARD:** Small parts. Not for children under 3 years.
 - Keep small loose parts and plastic bags out of the reach of children.
 - Not suitable for children under 3 years as foam pieces may break off and pose a choking hazard. Keep small children away when assembling.
- An adult must unfold and fold this product (as equipped).
- Continuous adult supervision required.
- Never use near motor vehicles.
- Never ride with more than one person.
- Excessive weight may cause a hazardous or unstable condition.
- Protective equipment should be worn. Do not allow a child to ride without a CPSC approved helmet, with the chinstrap securely fastened. Always wear shoes when using this product.
- Not to be use in traffic.
- Do not allow a child to ride the product at dusk, at night or at times of limited visibility.
- Do not allow a child to ride on roadways or alleys.
- Do not allow a child to ride off road, on grass or wet surfaces.
- Never use near streets, swimming pools (or other bodies of water), hills, steps, or sloped driveways.
- For use on smooth paved surfaces only.
- Understand all operating procedures before use.
- Do not tow or pull any objects with the product.
- Do not push or pull a child riding on the product.
- Use with caution, since skill is required to avoid falls or collisions causing injury to the user or third parties.
- Always comply with local laws and regulations.
- If anything does not operate properly, discontinue use.
- Replace worn or broken parts immediately with genuine replacement parts.
- Handlebar hand grip or tube end plugs should be replaced if damaged as bare tubes have been known to cause injury. All products with capped handlebar ends should be checked regularly to ensure that adequate protection for the ends of the handlebars are in place.
- Do Not modify the product.
- Self-locking nuts and other self-locking fixings may lose their effectiveness when re-used.

Helmet Warning Information

WARNING: **ALWAYS WEAR YOUR HELMET** **WHEN RIDING THIS PRODUCT!**

- Helmet should sit level on your head and low on your forehead. Exposed forehead can result in serious injury.
- Adjust the strap sliders below the ear on both sides.
- Buckle the chin strap. Adjust strap until it is snug.
- No more than two fingers should fit between the strap and your chin.
- A proper fitting helmet should be comfortable and not rock forward/backward or side to side.



MAINTENANCE

The scooter should be checked periodically for any loose, broken, or worn parts. Tighten any parts that are loose, and replace any worn or broken parts immediately. Periodic cleaning will prolong the useful life of this scooter.

SELF-LOCKING FASTENERS:

With repeated use, Self-Locking Fasteners may lose their ability to lock to the threads and may come loose. Frequently check Self-Locking Fasteners and replace when worn.

INSPECTION OF THE BEARINGS:

Frequently check the wheel bearings of the product. Replace the wheels when the bearings do not pass the following tests:

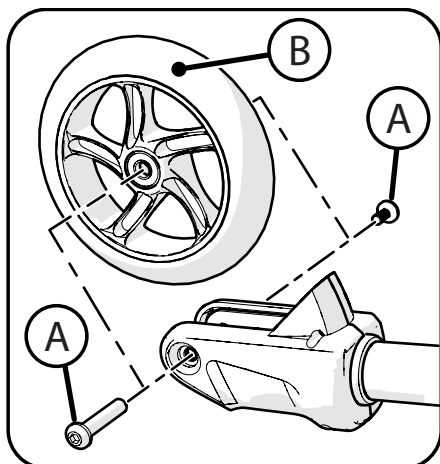
Lift each end of the product off the ground and spin the raised wheel by hand:

- The wheel should spin freely and easily.
- There should be no side-to-side movement at the wheel edge when pushed to the side with light force.

WEEKLY SERVICE:

Apply a few drops of general purpose oil to the sides of each wheel axle. Verify that the axle fasteners are tight.

Assembly And Adjustment Instructions



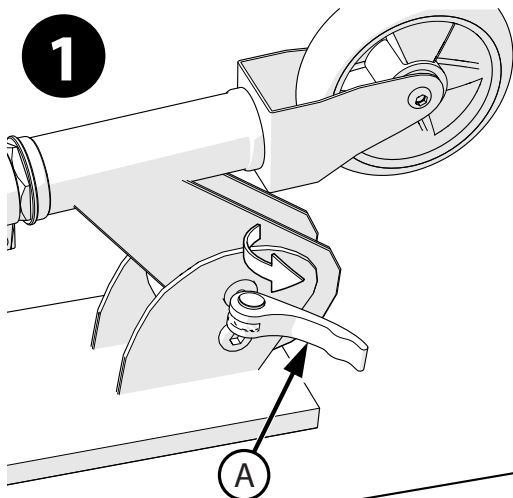
Models with unassembled front Wheel:

1. Remove Shoulder Screws (A) if pre-installed.
2. Place Front Wheel (B) into Fork so that axle holes line up.
3. Install Shoulder Screws (A) fully and securely.

Tools Needed



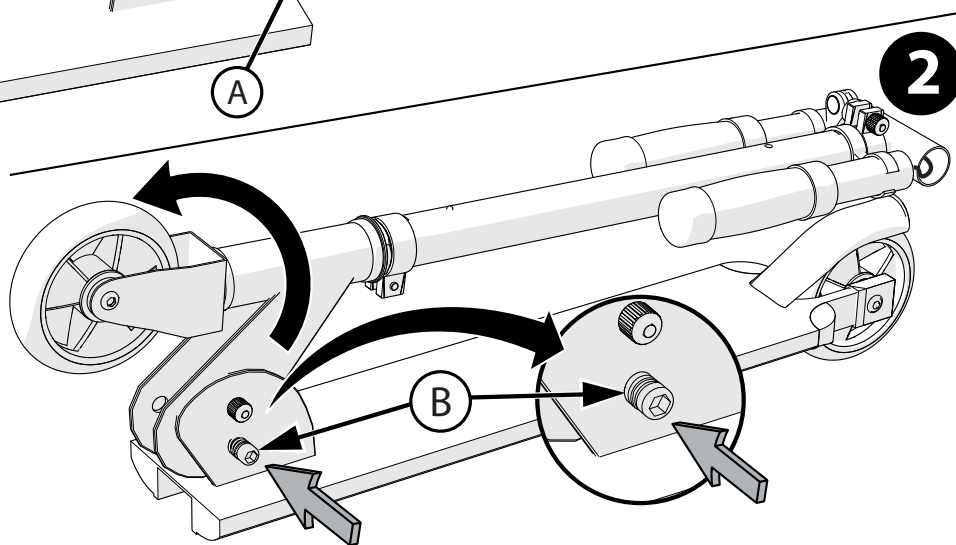
Metric Allen Wrenches



THIS SCOOTER IS SHIPPED PRE-ASSEMBLED.

Follow the instructions below to setup the scooter.

- 1 Open/Loosen Quick Release Lock (A).
- 2 Press the Release Button (B) and unfold steering head UP until it locks into the vertical position 3.

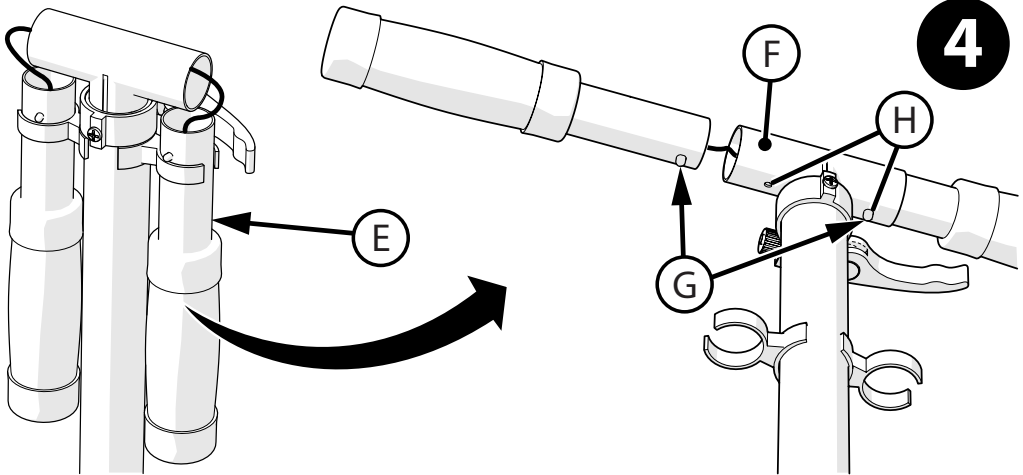
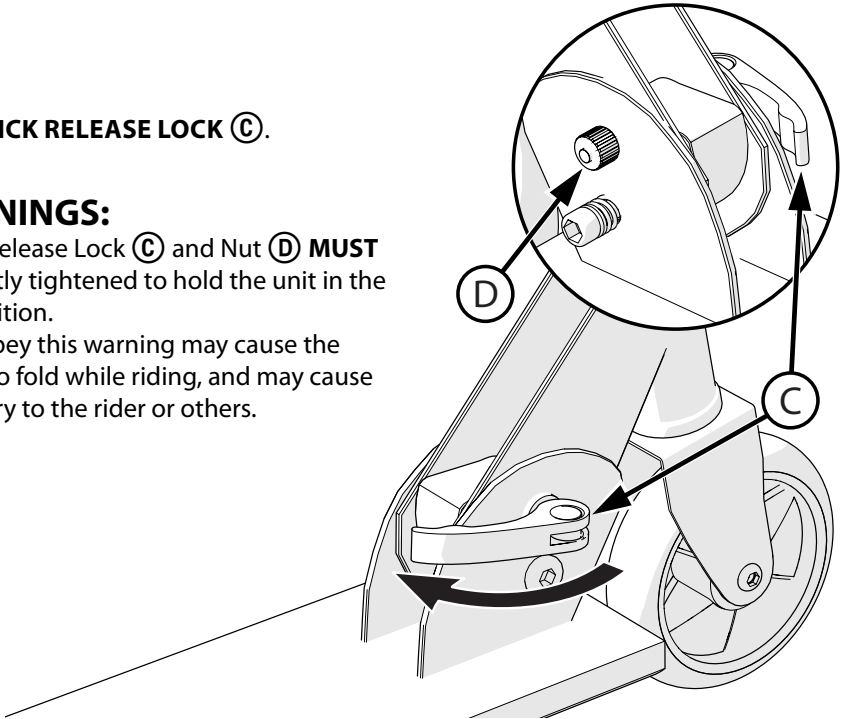


3

TIGHTEN QUICK RELEASE LOCK (C).

⚠ WARNINGS:

- The Quick Release Lock (C) and Nut (D) **MUST** be sufficiently tightened to hold the unit in the upright position.
- Failure to obey this warning may cause the handlebar to fold while riding, and may cause serious injury to the rider or others.

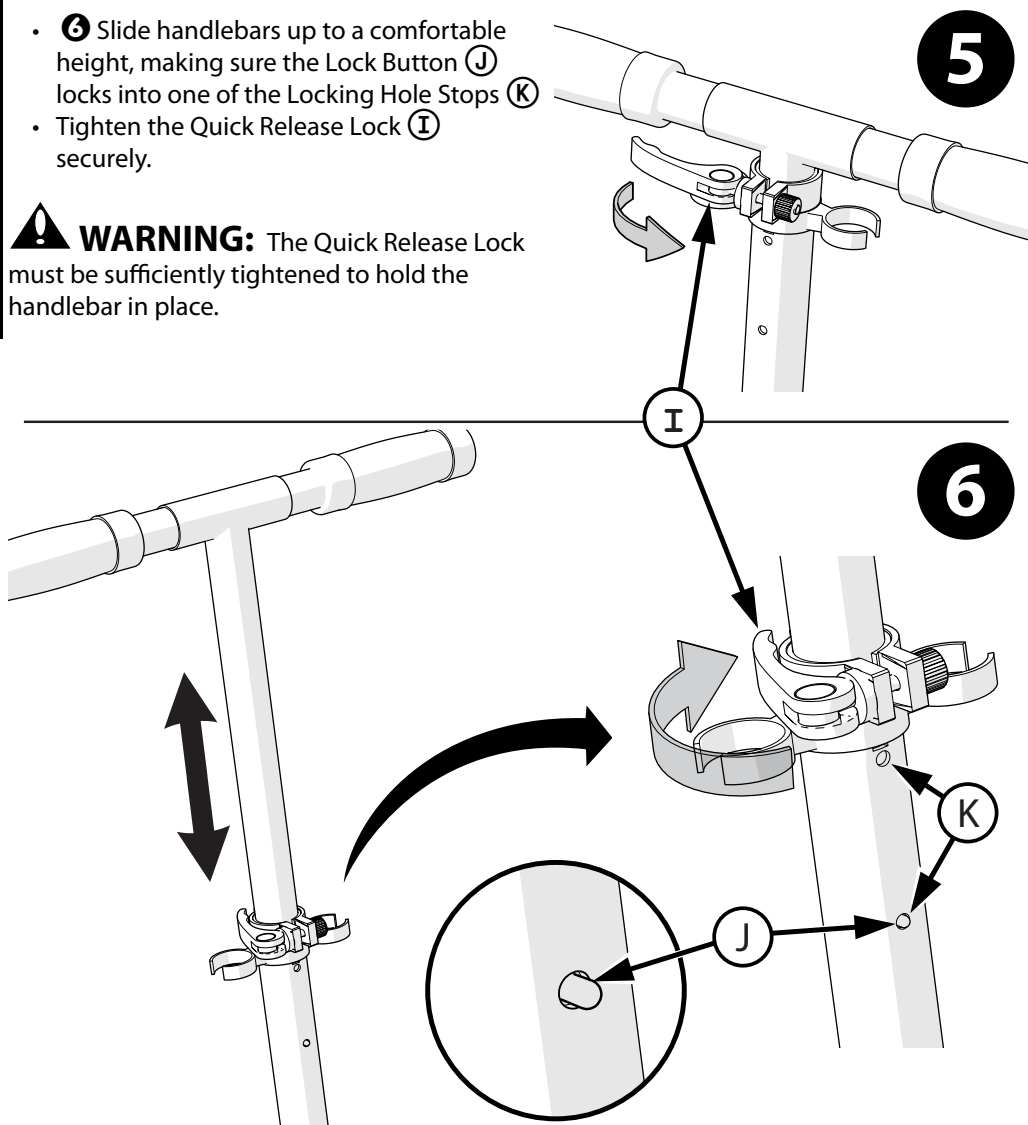


4 Insert the Handgrips (E) into the Handlebar (F). Ensure the lock buttons (G) on each handgrip are fully engaged with the Locking Hole Stops (H) in each side of the handlebar.

Assembly - continued

- **5** Open Quick Release Lock **I**
- **6** Slide handlebars up to a comfortable height, making sure the Lock Button **J** locks into one of the Locking Hole Stops **K**
- Tighten the Quick Release Lock **I** securely.

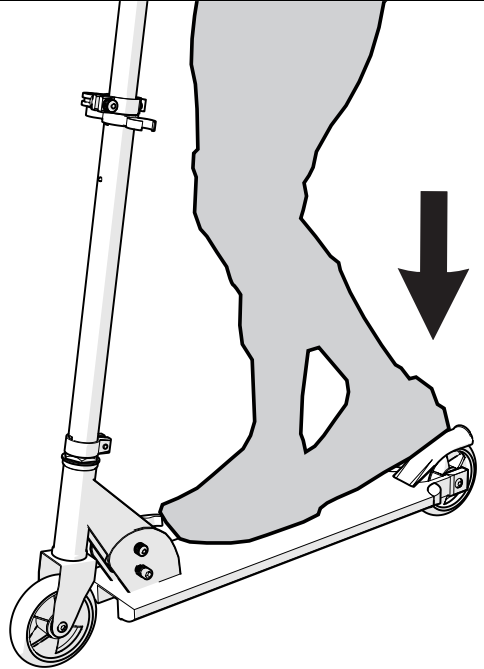
! WARNING: The Quick Release Lock must be sufficiently tightened to hold the handlebar in place.



OPERATING THE SCOOTER

The scooter is operated by placing one foot on the deck and pushing with the other foot. On some models the rear fender is hinged for use as a brake (fig 08). On other models where the rear fender is not hinged, the foot used to propel the scooter is also used to stop the scooter. This is also the secondary brake method for models with hinged fender. Steering is accomplished by turning the handlebar.

 **WARNING:** Always wear shoes when riding the scooter.



NOTES

Limited Warranty - US

General:

Part or model specifications are subject to change without notice.

This Limited Warranty is the only warranty for the product. ALL WARRANTIES OTHER THAN STATED HEREIN ARE DISCLAIMED INCLUDING IMPLIED WARRANTIES OF MERCHANTABILITY AND FITNESS FOR A PARTICULAR PURPOSE, TO THE EXTENT ALLOWABLE BY APPLICABLE LAW. ALL LIABILITY FOR INCIDENTAL, PUNITIVE, SPECIAL, OR CONSEQUENTIAL DAMAGES ARE EXPRESSLY DISCLAIMED, TO THE EXTENT ALLOWABLE BY APPLICABLE LAW.

The only uses for this product are described in this manual.

Warranty registration is not required.

The Limited Warranty extends only to the original consumer and is not transferable to anyone else.

What does this Limited Warranty cover?

This Limited Warranty covers defects in workmanship and materials for all parts of the product except those indicated below as not warranted.

What must you do to keep the Limited Warranty in effect?

This Limited Warranty is effective only if:

- Product is completely and correctly assembled.
- Product is used under normal conditions for its intended purpose (see the following section for excluded activities).
- Product receives all necessary maintenance and adjustments.
- Product is used for general transportation and recreational use only.

What is not covered by this Limited Warranty?

This product is designed for recreational use only. This Limited Warranty does not cover normal wear and tear, normal maintenance items, or any damage, failure, or loss that is caused by improper assembly, maintenance, adjustment, storage, or use of the product. This Limited Warranty does not extend to future performance.

This Limited Warranty will be void if the product is ever:

- Used in any competitive sport
- Used for stunt riding, jumping, aerobatics or similar activity
- Modified in any way

- Modified with the addition of a motor
- Ridden by more than one person at a time
- Rented, sold, or given away
- Used in a manner contrary to the instructions and warnings in this Owner's Manual

What will The Manufacturer do?

Manufacturer's sole and exclusive obligation under this Limited Warranty is to repair and/or replace, at its sole option, any covered defect in workmanship or materials.

How do you get service?

Contact the Customer Service Department.

- See included list for Customer Contact information.

What rights do you have?

This Limited Warranty gives you specific legal rights. You may also have other rights which vary from State to State.

For how long does this Limited Warranty last?

- When used in this Limited Warranty, the phrase "for life" means for as long as the original consumer owns the product.
- All components are warranted for 6 months from the date of purchase. Electronics and Wheels: 90 days.



[MÉXICO]

**ANTES DE DEVOLVER EL
PRODUCTO A LA TIENDA:**

**Comuníquese Con Servicio Al
Cliente De Huffy. Nos Complace
Ayudarlo Con Cualquier Parte O
Problema De Ensamblado Que
Pudiera Tener.**

Para obtener Servicio al cliente
rápido, visite:

www.huffybikes.com/

O LLAME AL TEL: 01800 1483 391
(Mexico only)

Para comunicarse por correo electrónico:
servicio@huffymex.com

[In the US and Canada]

PLEASE

**BEFORE RETURNING TO STORE:
Contact Huffy Customer Service.**

**We are glad to assist you with any parts or
assembly problems you might have!**

~

**VEUILLEZ NOTER : AVANT DE
RETOURNER AU MAGASIN :**

**Communiquez avec le service à la
clientèle de Huffy. Nous vous aiderons
volontiers avec tout problème concernant les
pièces ou le montage!**

For Fast Customer Service:

Pour un Service à la clientèle rapide :

www.huffybikes.com/contact

To Order Parts (US):

Pour obtenir des pièces (CANADA) :

www.huffybikes.com/parts

OR TEL: 1 800 872 2453 (US)

OU appelez le 1 800 872 2453 (CANADA)

For e-mail: www.huffybikes.com/contact

Pour communiquer par courriel : huffycanada@huffy.com

www.huffybikes.com/home/globalcontact/

for current contact information / para obtener la información de contacto actual / pour
les informations de contact actuelles



**For ASSEMBLY Help:
Ayuda de la ASAMBLEA:
Aide à l'ASSEMBLAGE :**

**Please REGISTER your Product!
Por favor, REGISTRE su producto!
L'ENREGISTREMENT de produit !**

