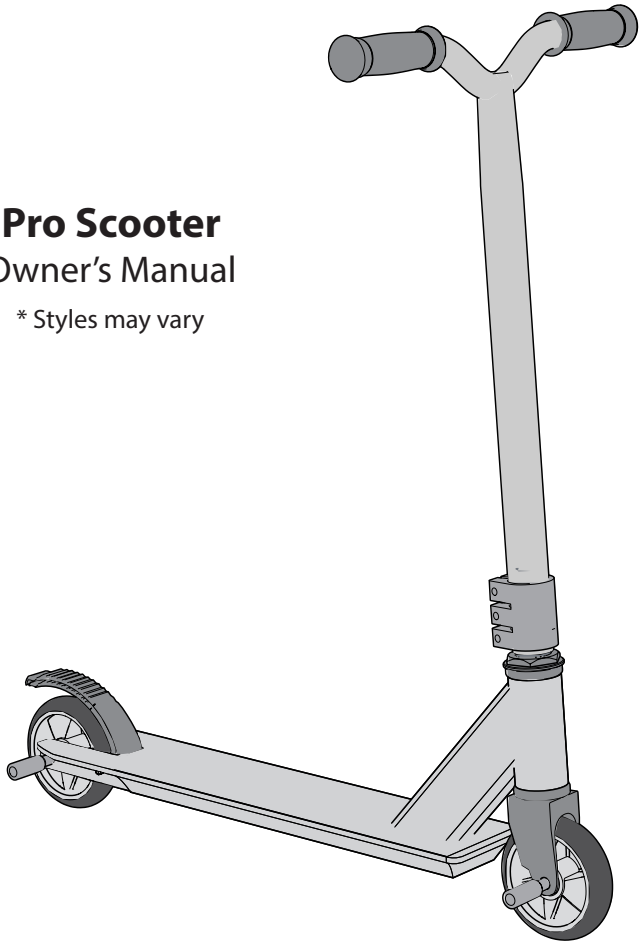




Date Code Label  
Here

# Pro Scooter Owner's Manual

\* Styles may vary



**This manual contains important safety, assembly, operation and maintenance information. Please read and fully understand this manual before operation.**

Save this manual for future reference.



Always wear approved helmet and safety equipment when using this product.

**See back page for Customer Service Information**



© Copyright Huffy Corporation 2021



## Index

• Safety Information .....	2-3
• Parts List .....	4
• Maintenance .....	5
• Assembly .....	6-8
• Operating the Scooter .....	9
• Warranty .....	10
• Warranty - Australia .....	31

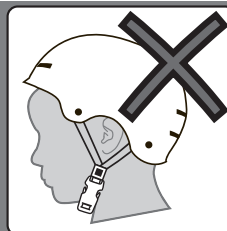
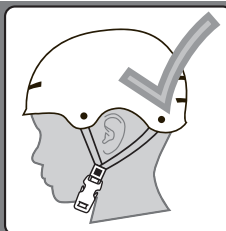
## WARNINGS:

- The user must be **8+ years**, and weigh no more than **220 lbs (100 kg)**.
- Avoid sharp bumps, drainage grates, and sudden surface changes. Scooter may suddenly stop. Watch out for pedestrians.
- Check and secure all fasteners before every ride.
- Avoid excessive speed associated with downhill rides.

### ADDITIONAL SAFETY WARNINGS:

- It is the responsibility of the adult to educate the child and determine if they are capable of operating the vehicle safely.
- Before using the vehicle the child must understand the controls and safety issues. They must also demonstrate the capability and skill to handle the vehicle and operate its controls to avoid falls or collisions.
- After complete assembly, remove and dispose of all protective material and poly bags. Keep poly bags away from child. Be sure to remove all packaging materials and parts from underneath the vehicle body.
- Ensure child uses common sense and safe practices when using the vehicle.
- An adult must unfold and fold this product (as equipped).
- At the end of useful product life, dispose according to local practice and requirements.


**ALWAYS WEAR  
YOUR HELMET  
WHEN RIDING THIS  
PRODUCT!**



Always read the user manual that comes with your helmet to make sure it is fitted and attached properly to the wearer's head according to the fitting instructions described in the user manual.

## Safety and Warning Information

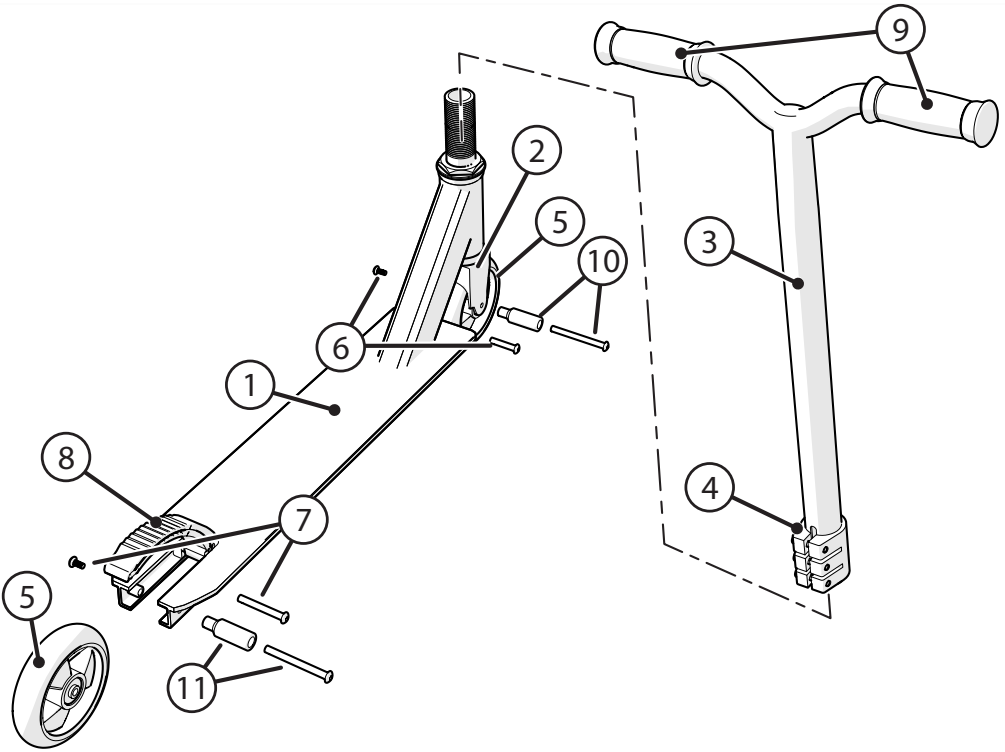
This product, like all wheeled vehicles, will provide safe, enjoyable transportation and recreation when used and maintained properly. Like bicycling, skateboarding, and in-line skating, riding this product can be dangerous even under the best of circumstances. We do not want you to get hurt. Please follow these safety rules. Keep children away during assembly.

 This symbol is important. It is the WARNING symbol. The warning symbol precedes safety instructions. Make sure the child understands these instructions. Failure to follow these instructions may result in injury to the rider or to others, or damage to the product.

### **WARNING TO AVOID SERIOUS INJURY:**

- Adult assembly required. An adult must unfold and fold this product (as equipped). Continuous adult supervision required. Do Not modify the product.
- **CHOKING HAZARD:** Not suitable for children under 3 years. Contains small parts.
  - Keep small loose parts and plastic bags out of the reach of children.
  - Not suitable for children under 3 years as foam pieces may break off and pose a choking hazard. Keep small children away when assembling.
- Never use near motor vehicles.
- Never ride with more than one person. Excessive weight may cause a hazardous or unstable condition.
- **Protective Equipment must be worn:** Always wear safety equipment such as a helmet that meets CPSC (or equivalent standard for your country) with chinstrap securely fastened, knee pads, elbow pads, wrist guards, gloves and shoes.
- Do not use in traffic.
- Do not allow a child to ride the product at dusk, at night or at times of limited visibility.
- Do not allow a child to ride on roadways or alleys.
- Do not allow a child to ride off road, on grass or wet surfaces.
- Never use near streets, swimming pools (or other bodies of water), hills, steps, or sloped driveways.
- For use on smooth paved surfaces only.
- Understand all operating procedures before use.
- Do not tow or pull any objects with the product.
- Do not push or pull a child riding on the product.
- Use with caution, since skill is required to avoid falls or collisions causing injury to the user or third parties.
- Always comply with local laws and regulations.
- If anything does not operate properly, discontinue use.
- Replace worn or broken parts immediately with genuine replacement parts.
- Handlebar hand grip or tube end plugs should be replaced if damaged as bare tubes have been known to cause injury. All products with capped handlebar ends should be checked regularly to ensure that adequate protection for the ends of the handlebars are in place.
- Self-locking nuts and other self-locking fixings may lose their effectiveness when re-used.
- The toy shall be used with caution, since it requires great skill, so as to avoid falls or collisions causing injury to the user and third parties.
- Ensure all locking devices are engaged before each ride.

# Parts Assembly



#	Description
1	Frame Deck
2	Fork Assembly
3	Handlebar
4	Handlebar Clamp
5	Wheel (x2)
6	Front Wheel Hardware
7	Rear Wheel Hardware
8	Fender/Brake
9	Handlebar Grip (x2)
10	Front Peg/Hardware (various models)
11	Rear Peg/Hardware (various models)

## Maintenance:

The scooter should be checked periodically for any loose, broken, or worn parts. Tighten any parts that are loose, and replace any worn or broken parts immediately. Periodic cleaning will prolong the useful life of this scooter.

### **SELF-LOCKING FASTENERS:**

With repeated use, Self-Locking Fasteners may lose their ability to lock to the threads and may come loose. Frequently check Self-Locking Fasteners and replace when worn.

### **INSPECTION OF THE BEARINGS:**

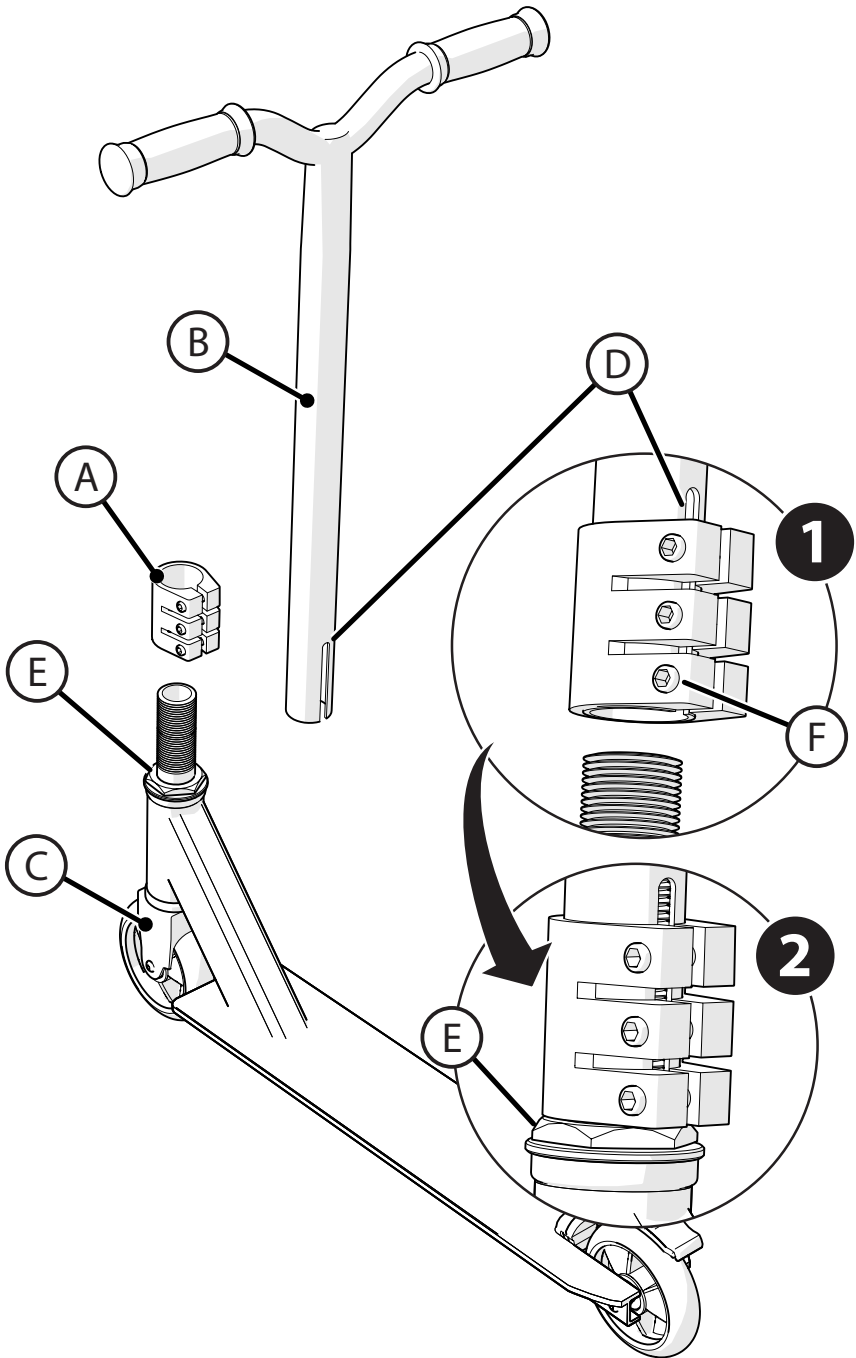
Frequently check the wheel bearings of the product. Replace the wheels when the bearings do not pass the following tests:

Lift each end of the product off the ground and spin the raised wheel by hand:

- The wheel should spin freely and easily.
- There should be no side-to-side movement at the wheel edge when pushed to the side with light force.

### **WEEKLY SERVICE:**

Apply a few drops of general purpose oil to the sides of each wheel axle. Verify that the axle fasteners are tight.



**NOTES:**

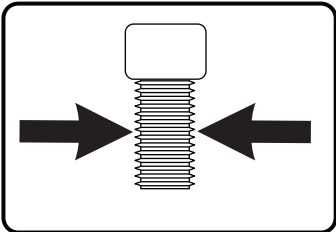
- Recommended Tools: Metric Allen Wrench Set and Torque Wrench.
  - Clamp may be 2 or 3 bolt design.
  - Clamp (A) may be pre installed from factory on Handlebar Post (B) and may need to be loosened before assembly.
1. Make sure the Front Wheel/Fork (C) is facing forward as shown.
  2. Place Clamp (A) onto Handlebar Post (B) so that Clamp is even with bottom of Handlebar Post (View 1) and Slot (D) is facing the **REAR**.
  3. Slide Handlebar and Clamp onto Threaded Steering Tube until they sit against Head Set Nut (E) (View 2).
  4. Tighten Clamp Screws (F) evenly and securely so that the Handlebar do not move - see torque table for recommended torque.

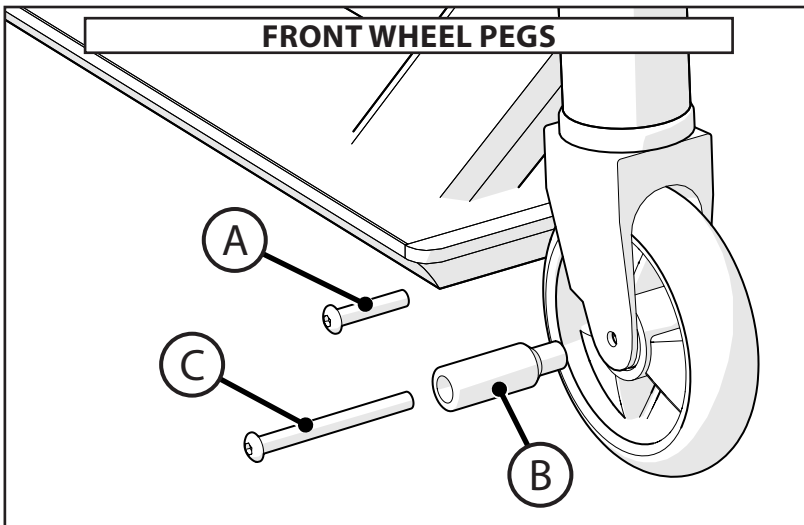
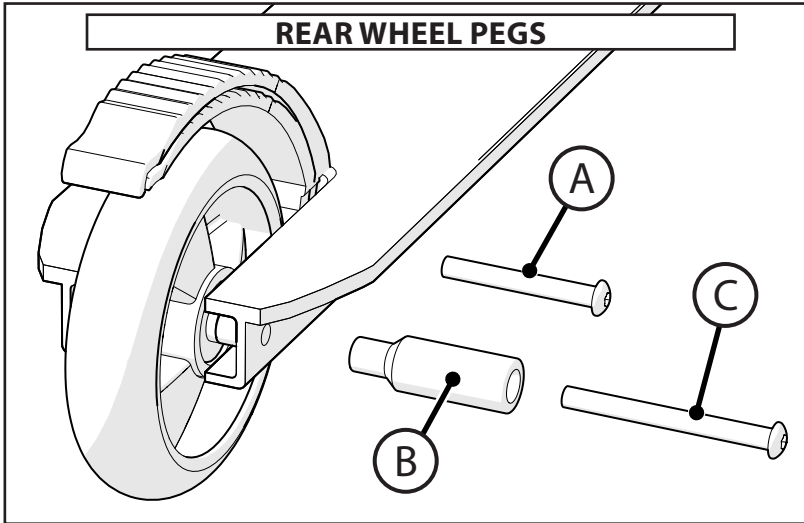
## Torque Table - Recommended Torque:

Use of a torque wrench is recommended. Recommended torque for each fastener is listed below. In addition to tightening to the recommended torque, please ensure the parts of the product are sufficiently tightened by performing the functional tests (in the component assembly sections of the

owner's manual) on each component as it is tightened.

**NOTE:** Please check that all fasteners on the product are torqued according to the table below:

Recommended Torque for clean, dry threads:		How to Measure:
<b>Fastener Size</b>	<b>Torque (ft-lb / N•m)</b>	Screw or bolt size is determined by the width at the THREADS as shown.  
.157 in (4 mm)	3.1 ft-lbs (4.2 N•m)	
.196 in (5 mm)	5 ft-lbs (6.8 N•m)	
.236 in (6 mm)	7 ft-lb (9.5 N•m)	
.275 in (7 mm)	12 ft-lbs (16.3 N•m)	
.314 in (8 mm)	17 ft-lbs (23 N•m)	
.393 in (10 mm)	33 ft-lbs (44.7 N•m)	



**NOTE:** Process is the same for Front and Rear Pegs.

1. Remove existing Shoulder Screws (A) on same side as Peg (B) installation.
  - If Long Shoulder Screw is not on side Peg is being installed, switch hardware so Long Shoulder Screw is installed on **same side as Peg**.
2. **Hold Wheel in place so Bearing/Spacers do not come out.**
3. Install Peg with included longer Shoulder Screw (C) as shown.
4. Tighten Shoulder Screws completely and securely - see torque table for recommended torque.
5. Make sure Wheel spins evenly and freely .

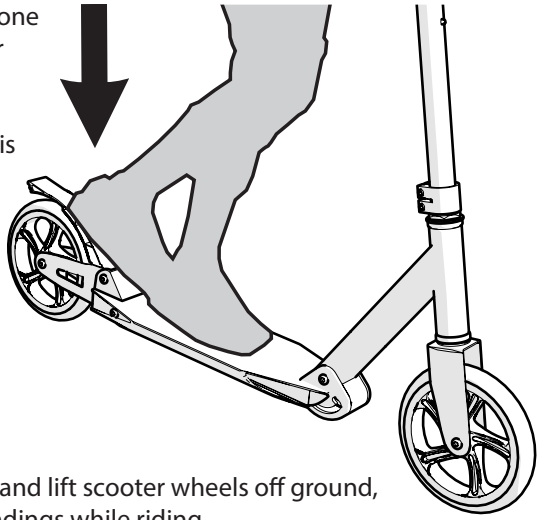


## Operating and Braking

**RIDING:** The scooter is operated by placing one foot on the deck and pushing with the other foot.

**BRAKING:** On some models the rear fender is hinged for use as a brake. With heel of foot, push down on rear fender to slow and stop scooter. Allow extra braking distance in wet weather. **Fender will be hot after braking.**

**STEERING:** While moving forward, gently turn handlebar and lean slightly into turn.



### **WARNINGS:**

- Scooters with wide decks may hit ground and lift scooter wheels off ground, causing an accident. Be careful of surroundings while riding.
- Always wear shoes when riding the scooter.



## Limited Warranty

### General:

Part or model specifications are subject to change without notice.

This Limited Warranty is the only warranty for the product. ALL WARRANTIES OTHER THAN STATED HEREIN ARE DISCLAIMED INCLUDING IMPLIED WARRANTIES OF MERCHANTABILITY AND FITNESS FOR A PARTICULAR PURPOSE, TO THE EXTENT ALLOWABLE BY APPLICABLE LAW. ALL LIABILITY FOR INCIDENTAL, PUNITIVE, SPECIAL, OR CONSEQUENTIAL DAMAGES ARE EXPRESSLY DISCLAIMED, TO THE EXTENT ALLOWABLE BY APPLICABLE LAW.

The only uses for this product are described in this manual.

Warranty registration is not required.

The Limited Warranty extends only to the original consumer and is not transferable to anyone else.

### What does this Limited Warranty cover?

This Limited Warranty covers defects in workmanship and materials for all parts of the product except those indicated below as not warranted.

### What must you do to keep the Limited Warranty in effect?

*This Limited Warranty is effective only if:*

- Product is completely and correctly assembled.
- Product is used under normal conditions for its intended purpose (see the following section for excluded activities).
- Product receives all necessary maintenance and adjustments.
- Product is used for general transportation and recreational use only.

### What is not covered by this Limited Warranty?

This product is designed for recreational use only. This Limited Warranty does not cover normal wear and tear, normal maintenance items, or any damage, failure, or loss that is caused by improper assembly, maintenance, adjustment, storage, or use of the product. This Limited Warranty does not extend to future performance.

### This Limited Warranty will be void if the product is ever:

- Used in any competitive sport
- Used for stunt riding, jumping, aerobatics or similar activity
- Modified in any way

- Modified with the addition of a motor
- Ridden by more than one person at a time
- Rented, sold, or given away
- Used in a manner contrary to the instructions and warnings in this Owner's Manual

### What will The Manufacturer do?

Manufacturer's sole and exclusive obligation under this Limited Warranty is to repair and/or replace, at its sole option, any covered defect in workmanship or materials.

### How do you get service?

Contact the Customer Service Department.

- See included list for Customer Contact information.

### What rights do you have?

This Limited Warranty gives you specific legal rights. You may also have other rights which vary from state to state, region to region.

### For how long does this Limited Warranty last?

- When used in this Limited Warranty, the phrase "for life" means for as long as the original consumer owns the product.
- All components are warranted for 6 months from the date of purchase. Electronics and Wheels: 90 days.

[ USA ]



**PLEASE - BEFORE RETURNING TO STORE:  
Contact Huffy Customer Service.  
We are glad to assist you  
with any parts or assembly problems you might have!**

For Fast Customer Service and email:  
**[www.huffybikes.com/contact](http://www.huffybikes.com/contact)**

To Order Parts:  
**[www.huffybikes.com/parts](http://www.huffybikes.com/parts)**

OR TEL: 1 800 872 2453 (US)

[ CANADA ]

**PLEASE - BEFORE RETURNING TO STORE:  
Contact Huffy Customer Service.**

**We are glad to assist you with any parts or assembly problems you might have!**

**AVANT DE RETOURNER AU MAGASIN :**

**Communiquez avec le service à la clientèle de Huffy. Nous vous aiderons  
volontiers avec tout problème concernant les pièces ou le montage!**

For fast customer service in Canada / Pour un service à la clientèle rapide au Canada:

Call / Appelez : 1-800-872-2453

Or Email / Ou Courriel : [huffycanada@huffy.com](mailto:huffycanada@huffy.com)

Or visit / Ou visitez : [www.huffybikes.com/global-contacts](http://www.huffybikes.com/global-contacts)

[ MÉXICO ]

**ANTES DE DEVOLVER EL PRODUCTO A LA TIENDA:**

**Comuníquese Con Servicio Al Cliente De Huffy. Nos Complace Ayudarlo Con  
Cualquier Parte O Problema De Ensamblado Que Pudiera Tener.**

Para obtener Servicio al cliente rápido, visite:

**[www.huffybikes.com.mx](http://www.huffybikes.com.mx)**

Contactáanos por WhatsApp al 222 422 4955

Visita nuestra página de Facebook HuffyMexico

**● LLAME AL TEL:**

800 1 HUFFY 1 (800 1 48339 1)

**(Mexico only)**

Para comunicarse por correo electrónico:

[servicio.mexico@huffy.com](mailto:servicio.mexico@huffy.com)

[ AUSTRALIA ]

**For Any Issues with this Product, Contact Customer Service.**

**Hunter Products Pty Ltd**

**Phone: 1800 224 094**

233 Bay Street, Brighton Victoria, 3186,  
Australia

Email: [enquiries@hunterproducts.com.au](mailto:enquiries@hunterproducts.com.au)



For ASSEMBLY Help:  
Aide à l'ASSEMBLAGE:  
Ayuda de la ASAMBLEA:

Please REGISTER your Product:  
Veuillez ENREGISTRER l'article!  
Por favor, REGISTRE su producto:



**[www.huffybikes.com/home/globalcontact/](http://www.huffybikes.com/home/globalcontact/)**

for current contact information / pour les informations de contact actuelles / para obtener la  
información de contacto actual